



# District 6 DISPATCH

Serving the upper Methow Valley from Gold Creek to Lost River - SUMMER 2018

## BECOME **EMBER SMART** - THINGS YOU CAN DO

The most dangerous fuel elements are burning **embers** or **fire brands** that fall like snow and are unpredictable. Embers can travel miles from a wildfire, landing on roofs, in brush, on your deck...where it can smolder for hours before re-igniting. Here are some simple tips to lessen ember hazards:

### **DECKS & PORCHES**

Trim landscape away from decks, porches and overhangs. Clean out spaces underneath and trim back branches from overhead. Remove combustibles like leaves, doormats and furniture pads.

### **HEAT TRAPS**

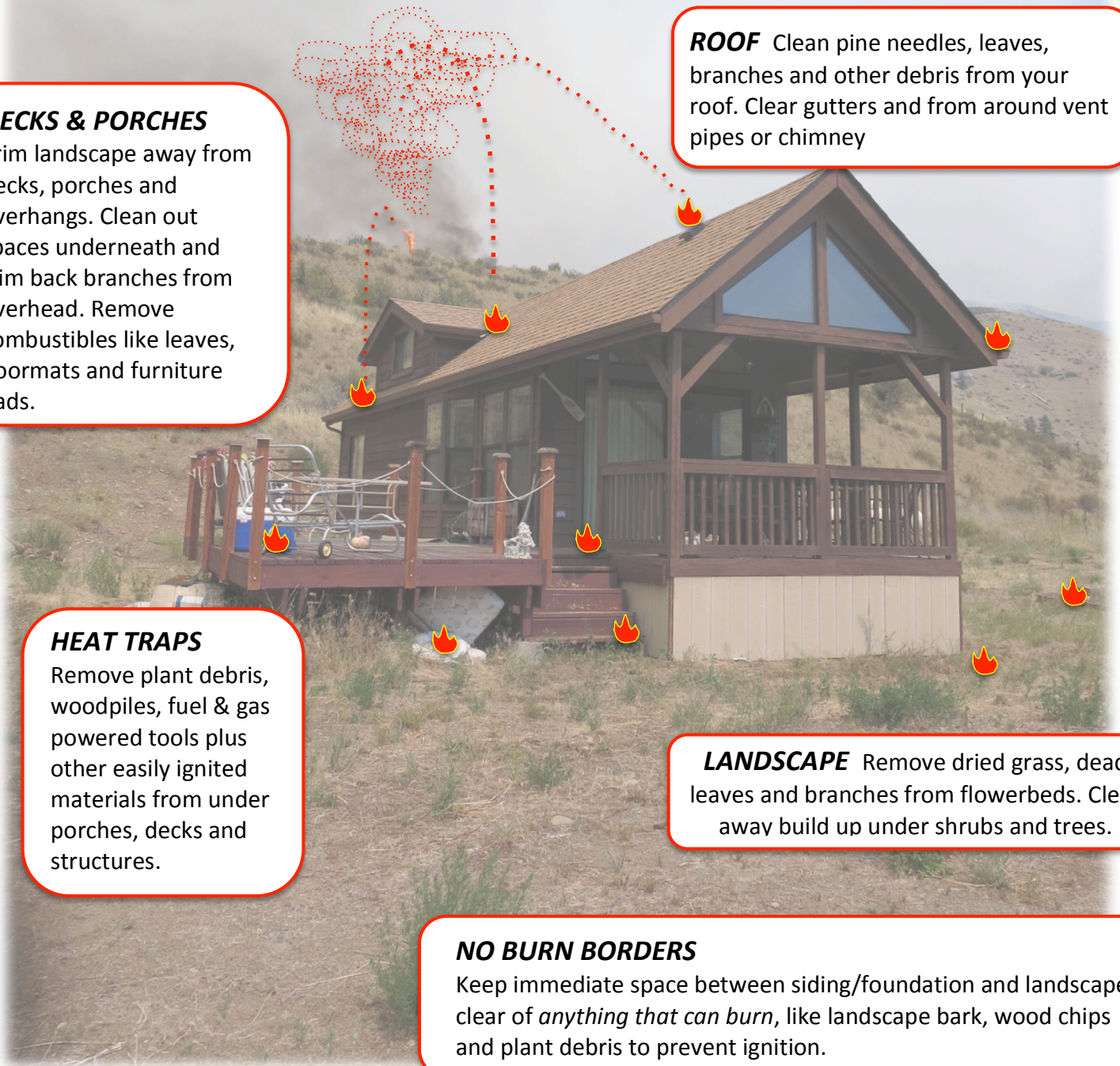
Remove plant debris, woodpiles, fuel & gas powered tools plus other easily ignited materials from under porches, decks and structures.

**ROOF** Clean pine needles, leaves, branches and other debris from your roof. Clear gutters and from around vent pipes or chimney

**LANDSCAPE** Remove dried grass, dead leaves and branches from flowerbeds. Clear away build up under shrubs and trees.

### **NO BURN BORDERS**

Keep immediate space between siding/foundation and landscape clear of *anything that can burn*, like landscape bark, wood chips and plant debris to prevent ignition.



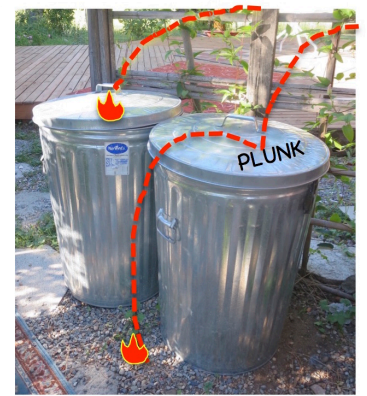
Wildfire creates airborne sparks or embers that spread fire fast! Protect your home

# EMBER SMART THINGS YOU CAN DO

**Protect Propane Tanks** Remove dead grasses, debris and anything flammable from under and around the tank. Keep trees and shrubs trimmed back from sides and above tank. *Know how to turn off propane at tank in the event of fire or evacuation.*



## Trash Cans & Recycle Bins



Use garbage cans with tight fitting lids near the house or structures. Move newspaper-recycling bins indoors during fire season.

Division Chief Rusty Stamps has been promoted to the new assistant chief for the fire district. He is filling the position previously held by Cody Acord. The Fire commission plans to hire another division chief to replace Stamps.



LOCAL  
POSTAL CUSTOMER  
EGRWSS



Okanogan County Fire District 6  
P.O. Box 895, Winthrop, WA 98862  
(509) 996-2227 Fax: (509) 996-8039  
www.okanogancountyfd6.com

